



GT-S shown in Solar Yellow with available 16-in. aluminum alloy wheels and available Action Package.

#### 05 MODEL GRADES

**With moves that were born on the track, it will have you thinking you were, too.** The 2005 Toyota Celica boasts precise handling and quick reflexes. Then there's the strength part. The GT-S is powered by a 1.8-liter VVTL-i engine that delivers 180 hp — 100 hp per liter. Which means commanding the 6-speed manual or available 4-speed Sportshift automatic transmission will accelerate your spirit in no time at all. Another model that corners with authority is the GT. It too has an aggressive stance inspired by Indy cars. But the most awesome Celicas are the GT and GT-S equipped with the available Action Package. Both flaunt rocker panels, a rear wing spoiler and distinctively styled exhaust tip with surround, color-keyed headlamps, clear taillight lens, and aero front and rear bumpers. The 2005 Toyota Celica: a few minutes in the driver's seat might just inspire you to hire a pit crew.



GT-S shown in Solar Yellow with available 16-in. aluminum alloy wheels, power tilt/slide moonroof and available Action Package.



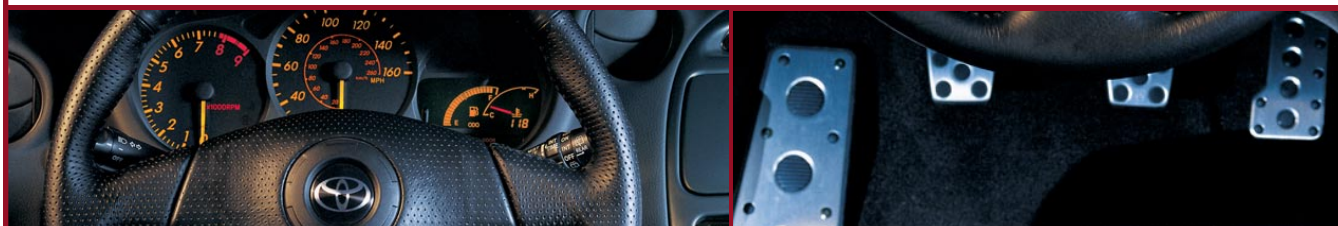
GT-S shown with available leather-trimmed sport seats and JBL 3-in-1 AM/FM Cassette/6-disc CD changer

## 05 INTERIOR

**In this cockpit, you can control everything. Except your enthusiasm.** The 6-way adjustable front sport seats will put you right where you want to be: in charge. The drilled aluminum sport pedals<sup>1</sup> and a race-inspired instrument panel not only look the part, they play the part. And with the available JBL 3-in-1 audio system<sup>2</sup> with power antenna enhancing your experience, you'll realize this is even more than you ever would have imagined you'd find in a race car. Including yourself.

<sup>1</sup> Standard on GT-S.

<sup>2</sup> Available on GT-S.



**MODEL GRADE FEATURES**

	GT	GT-S		GT	GT-S
<b>Exterior</b>					
Color-keyed bumpers and door handles	S	S	15-in. 5-spoke aluminum alloy wheels with P205/55R15 tires	—	S
Projector beam/multi-reflector halogen headlamps	S	S	16-in. 5-spoke aluminum alloy wheels with P205/50R16 tires	—	0
High Intensity Discharge (HID) headlamps <sup>1</sup>	0	0	Tinted glass	S	S
Integrated fog lamps	0 <sup>2</sup>	S	Dual color-keyed power outside mirrors	S	S
15-in. steel wheels with P195/60R15 tires with full wheel covers	S	—	Power tilt/slide moonroof with retained power and sunshade	0 <sup>3</sup>	0
15-in. 5-spoke aluminum alloy wheels with P195/60R15 tires	0	—	Rear spoiler	0 <sup>2</sup>	0 <sup>1</sup>
<b>Interior</b>					
Dual sun visors with driver and passenger vanity mirrors	S	S	Dual front and rear cup holders	S	S
Tilt steering wheel	S	S	Digital quartz clock	S	S
Leather-wrapped steering wheel and manual shift lever	—	S	Drilled aluminum sport pedals	—	S
Instrumentation: analog speedometer and tachometer; digital LCD fuel gauge and odometer with twin tripmeters; and seatbelt disconnect, door-ajar, battery, oil pressure, brake, check engine and low-fuel level warning lights	S	S	Hood and fuel-filler door releases	S	S
Washer-linked intermittent windshield wipers	S	S	AM/FM CD with six speakers	S	—
Defroster-linked, CFC-free air conditioning	S	S	AM/FM 6-disc CD changer with six speakers	0	S
Power windows with retained power and driver's auto-down feature	P	S	JBL 3-in-1 AM/FM Cassette/6-disc CD changer with eight speakers	—	0
Power door locks with anti-lockout feature	P	S	Remote keyless entry system	0 <sup>3</sup>	0
Cruise control	P	S	Fabric door trim with integrated speakers and dual map pockets	S	S
Center console with storage compartment	S	S	Fabric-trimmed 6-way adjustable front sport seats	S	S
			Leather-trimmed sport seats	—	0 <sup>4</sup>
			Heavy-duty electric rear window defogger	S	S
<b>Safety and Convenience</b>					
Front and rear energy-absorbing crumple zones	S	S	Emergency Locking Retractor (ELR) on driver's belt, Automatic/Emergency Locking Retractors (ALR/ELR) on all other seatbelts	S	S
Side-impact door beams	S	S	Adjustable front seatbelt shoulder anchors	S	S
Hood hold-down hooks	S	S	Front seatbelt pretensioners with force limiters	S	S
Daytime Running Lights (DRL) with auto on/off feature	S	S	Soft upper interior trim	S	S
Anti-lock Brake System (ABS)	0	0	Center high-mount stop lamp (CHMSL)	S	S
Driver and front passenger dual-stage airbags <sup>5</sup>	S	S			
Driver and front passenger seat-mounted side airbags <sup>5</sup>	0	0			
3-point seatbelts in all seating positions	S	S			

**S** = Standard      **0** = Optional      **—** = Not Available  
**P** = Feature is available only as part of an option package.

**AVAILABLE PACKAGES AND OPTIONS**
**GT Available Options**

- Anti-lock Brake System (ABS)
- High Intensity Discharge (HID) headlamps<sup>1</sup>
- P195/60R15 tires on 15-in. 5-spoke aluminum alloy wheels
- Power tilt/slide moonroof with retained power and sunshade<sup>6</sup>

- Rear spoiler<sup>2</sup> — includes integrated fog lamps
- Remote keyless entry system<sup>6</sup>
- Driver and front passenger seat-mounted side airbags<sup>5</sup>
- AM/FM 6-disc CD changer with six speakers

**GT Available Packages**

**Upgrade Package** — includes power windows and door locks, and cruise control  
**Cold Area Package** — includes heavy-duty battery and starter motor, and intermittent rear window wiper

**Action Package** — includes aggressively styled front and rear bumpers, rocker panels and rear spoiler; fog lamps; body color-matched painted headlights; clear taillight lens; larger hood scoop; rear under-bumper diffuser; tailpipe surround and tip

**GT-S Available Options**

- Anti-lock Brake System (ABS)
- High Intensity Discharge (HID) headlamps<sup>1</sup>
- P205/50R16 tires on 16-in. 5-spoke aluminum alloy wheels
- Power tilt/slide moonroof with retained power and sunshade
- JBL 3-in-1 AM/FM Cassette/6-disc CD changer with eight speakers and diversity antenna

- Rear spoiler<sup>2</sup>
- Leather-trimmed sport seats<sup>4</sup>
- Driver and front passenger seat-mounted side airbags<sup>5</sup>
- Remote keyless entry system

**GT-S Available Package**

**Action Package** — includes aggressively styled front and rear bumpers, rocker panels and rear spoiler; body color-matched painted headlights; clear taillight lens; larger hood scoop; rear under-bumper diffuser; tailpipe surround and tip

1. Not available with Action Package.

2. Also available in Action Package.

3. Requires Upgrade Package.

4. Requires power moonroof.

5. The Toyota driver, front passenger and front seat-mounted side airbags are Supplemental Restraint Systems (SRS). The driver and front passenger airbags are designed to deploy in severe (usually frontal) collisions where the magnitude and duration of the forward deceleration of the vehicle exceed the design threshold level. The side airbags are designed to inflate in certain types of severe side-impact collisions. In all other accidents,

the airbags will not inflate. To decrease the risk of injury from a deploying airbag, always wear seatbelts, sit upright in the middle of the seat as far back as possible from the airbag modules and do not lean against the door. Do not put objects in front of an airbag or around the seatback. Do not use rearward-facing child seats in any front passenger seat. The force of a deploying SRS airbag may cause serious injury or death. Please see your *Owner's Manual* for further instructions.

6. Requires Upgrade Package on GT models.



## SPECIFICATIONS

	GT	GT-S
<b>Mechanical/Performance</b>		
Engine	1.8-liter double overhead cam (DOHC) 16-valve 4-cylinder with Variable Valve Timing with intelligence (VVT-i)	1.8-liter double overhead cam (DOHC) 16-valve 4-cylinder with Variable Valve Timing and Lift with intelligence (VVTL-i)
Bore x stroke	79.0 mm x 91.5 mm	82.0 mm x 85.0 mm
Compression ratio	10.0:1	11.5:1
Induction system	Multi-point electronic fuel injection (EFI)	Multi-point electronic fuel injection (EFI)
Ignition system	Electronic, with Toyota Direct Ignition (TDI)	Electronic, with Toyota Direct Ignition (TDI)
Horsepower	140 hp @ 6400 rpm	180 hp @ 7600 rpm
Torque	125 lb.-ft. @ 4200 rpm	130 lb.-ft. @ 6800 rpm
Transmission	5-speed manual — standard 4-speed electronically controlled transmission (ECT) — available	6-speed manual — standard 4-speed Sportshift electronically controlled transmission (ECT) — available
Suspension	Independent MacPherson strut front suspension with stabilizer bar; double-wishbone rear suspension with stabilizer bar	
Steering	Power-assisted rack-and-pinion	Power-assisted rack-and-pinion
Turning circle (ft.)	36.3	36.3
Brakes	Power-assisted with 10.8-in. ventilated front disc/rear drum	Power-assisted with 10.8-in. ventilated front disc/10.6-in. solid rear disc
4-wheel Anti-lock Brake System (ABS)	Available	Available
<b>Exterior Dimensions (in.)</b>		
Overall height	51.4	51.4
Overall width	68.3	68.3
Overall length	170.5	170.5
Wheelbase	102.4	102.4
Track (front/rear)	58.6/58.2	58.6/58.2
Ground clearance	5.5	5.5
Coefficient of drag (Cd)	.32	.32
<b>Interior Dimensions front/rear (in.)</b>		
Head room	38.4/35.0	38.4/35.0
Shoulder room	52.6/50.6	52.6/50.6
Hip room	51.3/46.8	51.3/46.8
Leg room	43.6/27.0	43.6/27.0
Seating capacity	4	4
<b>Weights and Capacities</b>		
Curb weight (manual/automatic) (lb.)	2425/2460	2500/2580
Passenger volume with/without moonroof (cu. ft.)	76.3/78.3	76.3/78.3
Cargo volume (cu. ft.) <sup>1</sup>	16.9	16.9
Fuel tank (gal.)	14.5	14.5
<b>Tires</b>		
Size		
Standard	P195/60R15 tires on 15-in. steel wheels with full wheel covers	P205/55R15 tires on 15-in. 5-spoke aluminum alloy wheels
Available	P195/60R15 tires on 15-in. 5-spoke aluminum alloy wheels	P205/50R16 tires on 16-in. 5-spoke aluminum alloy wheels
Type	All-Season	Performance <sup>2</sup>
Spare	Temporary	Temporary
<b>Mileage Estimates (mpg city/highway)<sup>3</sup></b>		
Manual	27/33	24/33
Automatic	29/36	25/31

1. Cargo and load capacity limited by weight and distribution.

2. Performance tires are expected to experience greater tire wear than conventional tires. Tire life may be less than 24,000 miles, depending upon driving conditions.

3. 2005 preliminary mileage estimates determined by Toyota. EPA mileage estimates not available at time of posting. Actual mileage may vary.

## TOYOTA FINANCIAL SERVICES\*

Now that you're thinking about purchasing or leasing a Toyota, you may also want to consider leasing or purchasing your new vehicle through your participating dealer and Toyota Financial Services (TFS). TFS offers a variety of high-quality finance and lease products to complement your lifestyle. If you are about to graduate from college or are a recent college graduate, you may qualify for special benefits through our College Graduate Finance Program.

Few companies can match the expertise, quality customer care and total value of TFS. Ask your Toyota dealer or go to [www.toyotafinancial.com](http://www.toyotafinancial.com) for details.

\*Toyota Financial Services is a service mark of Toyota Motor Credit Corporation and Toyota Motor Insurance Services, Inc. Products are available to qualified customers through your participating Toyota dealer and Toyota Financial Services.



**COMBINATIONS**
**GT**

**Celica MSRP Starting At<sup>1</sup>:**

GT Manual: \$17,670  
GT Automatic: \$18,470



GT standard 15-in. wheel cover  
GT available 15-in. aluminum alloy wheel

**GT-S**


GT-S Manual: \$22,335  
GT-S Automatic: \$23,035



GT-S standard 15-in. aluminum alloy wheel  
GT-S available 16-in. aluminum alloy wheel

<sup>1</sup> 2005 Manufacturer's Suggested Retail Price, excludes the Delivery, Processing and Handling Fee of \$540 for Cars and \$565 for Trucks, Vans and SUVs. (Historically, vehicle manufacturers and distributors have charged a separate fee for processing, handling and delivering vehicles to dealerships. Toyota's charge for these services is called the "Delivery, Processing and Handling Fee" and is based on the value of the processing, handling and delivery services Toyota provides as well as Toyota's overall pricing structure. Toyota may make a profit on the Delivery, Processing and Handling Fee.) Excludes taxes, license, title and available or regionally required equipment. The Delivery, Processing and Handling Fee in AL, FL, GA, NC and SC is \$35 higher for Trucks, Sienna and SUVs, and \$50 higher for all other Toyota vehicles. The Delivery, Processing and Handling Fee in AR, LA, MS, OK and TX is \$35 higher for all Toyota vehicles. Actual dealer price may vary. Pricing, specifications, standard features and available equipment are based on information available when this page was produced and are subject to change without notice.

**FABRIC**

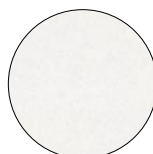

GT fabric in Black, Black/Silver  
or Black/Red (shown)



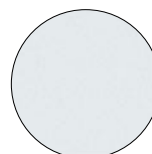
GT-S fabric in Black



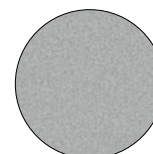
Available GT-S leather trim  
in Black

**COLOR**


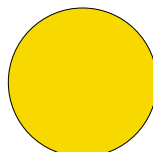
Super White with Black/Silver  
(GT) or Black (GT-S<sup>2</sup>) interior



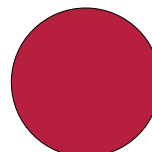
Silver Streak Mica with  
Black/Silver (GT) or Black  
(GT-S<sup>2</sup>) interior



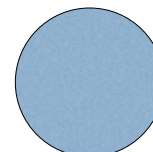
Thunder Cloud Metallic<sup>3</sup> with  
Black/Silver or Black/Red  
(GT) or Black (GT-S<sup>2</sup>) interior



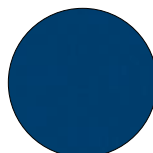
Solar Yellow with Black  
(GT and GT-S<sup>2</sup>) interior



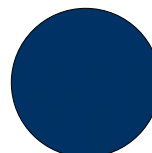
Absolutely Red with  
Black/Red (GT) or Black  
(GT and GT-S<sup>2</sup>) interior



Zephyr Blue Metallic with  
Black (GT and GT-S<sup>2</sup>) interior



Spectra Blue Mica with  
Black/Silver (GT) or  
Black (GT-S<sup>2</sup>) interior



Carbon Blue with Black/Silver  
(GT) or Black (GT-S<sup>2</sup>) interior



Black with Black/Silver (GT)  
or Black (GT-S<sup>2</sup>) interior

<sup>2</sup> GT-S models: Black cloth standard, Black leather trim available.  
<sup>3</sup> Available with Action Package only.

**WARRANTIES**

Every Toyota Car, Truck and SUV is built to exceptional standards. And that's not idle boasting. We back it up with these Limited Warranty Coverages:

**Basic:** 36 months/36,000 miles (all components other than normal wear and maintenance items).

**Powertrain:** 60 months/60,000 miles (engine, transmission/transaxle, front-wheel drive, rear-wheel drive, seatbelts and airbags).

**Rust-Through:** 60 months/unlimited miles (corrosion perforation of sheet metal).

**Emissions:** Coverages vary under Federal and California regulations. Refer to applicable Owner's Warranty Information booklet for details.

Some vehicles are shown with available equipment. Seatbelts should be worn at all times. For details on vehicle specifications, standard features and available equipment in your area, contact your Toyota dealer. A vehicle with particular equipment may not be available at the dealership. Ask your Toyota dealer to help locate a specifically equipped vehicle.

**Accessories:** Accessories installed at the time of the new vehicle purchase are covered for 36 months/36,000 miles from the vehicle's in-service date, whichever occurs first, under the New Vehicle Limited Warranty.

Accessories installed by the dealer after the new vehicle purchase are covered for 12 months, regardless of mileage, from the accessory installation date, or the remainder of the New Vehicle Limited Warranty, whichever provides greater coverage.

Accessories purchased over the counter are covered for 12 months from the date of purchase. Car covers are warranted for 12 months from the purchase date and are not covered by the New Vehicle Limited Warranty.

All information presented herein is based on data available at the time of posting, is subject to change without notice and pertains specifically to mainland U.S.A. vehicles only (may differ in the state of Hawaii, Puerto Rico, the U.S. Virgin Islands and in other regions).



For Toyota Mobility program details, go to  
[www.toyota.com/mobility](http://www.toyota.com/mobility) or call the Toyota Customer  
Assistance Center at 1-800-331-4331.

**1-800-60-TOYOTA**

**toyota.com**

©2004 Toyota Motor Sales, U.S.A., Inc.  
KZ5-090



## 05 ACCESSORIES

### **A** Auto-Dimming Mirror

Improve your driving safety with an Auto-Dimming Mirror. Its built-in sensors detect headlight glare and automatically dim the mirror to reduce eyestrain.

### **B** CD Autochanger (6-Disc) Trunk Mount

The kids want you to turn up the radio — well now you can with an Audio Upgrade! Upgrade your vehicle's current audio system with a Genuine Toyota cargo-mounted 6-Disc CD Changer.

### **C** Vehicle Intrusion Protection (VIP) RS3200 Plus Security System

This advanced multi-featured security system helps protect against theft. Your insurance deductible may be reimbursed if your vehicle is stolen.

Specific terms and conditions apply. Please consult VIP Consumer Limited Warranty Card or call TMS Commercial Insurance Department at (888) 238-8125.

### **D** Carpet Floor Mats

Color-coordinated floor mats protect your original carpeting while adding some flair with an embroidered Celica logo. The non-skid backing and positive retention clip help prevent them from sliding.

### **E** Simulated Carbon Fiber Dash Appliqué by AccuLaser®

Race-inspired simulated carbon fiber-style dash enhances the look of your vehicle's interior. A special UV coating protects the dash from cracking and fading.

### **F** Trunk Mat

Let's face it, spills happen. Help protect your trunk with these custom mats. Non-skid backing helps keep them in place.



G



H



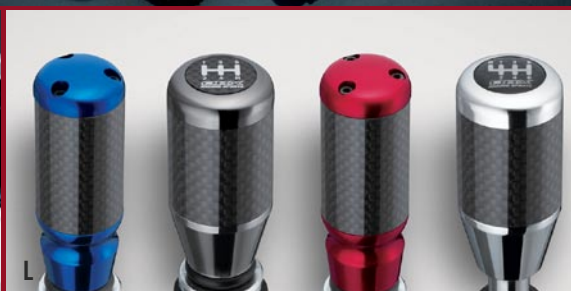
I



J



K



L

## 05 ACCESSORIES

### G Wheel Locks

Wheels can make the vehicle. Keep your wheels where you need them — on your car. Available for alloy wheels.

### H Sport Pedals by OBX Racing Sports®

Replace your drab stock pedals with a set of sport pedals by OBX Racing. Available in a sleek silver finish for automatic and manual transmission.

### I Emergency Assistance Kit

Drive with confidence in knowing that you are secure with your Emergency Assistance Kit. This basic emergency assistance kit contains jumper cables, multi-tool, flashlight, emergency blanket, duct tape, bungee, survival whistle, hose clamp and more...

### J First Aid Kit

This handy First Aid Kit puts supplies where they are needed, when they are needed. The kit contains sterile medical dressings, anti-bacterial ointment and an assortment of other supplies.

### K Cargo Net

Don't you hate it when your stuff rolls around while you are driving? The Cargo Net is your answer. It's easy to install and even easier to use.

### L Shift Knobs by OBX Racing Sports®

Black knobs not your style? Get tech with these carbon fiber-sleeved sport shift knobs by OBX Racing. Available in Chrome, Titanium, Red and Blue. Manual transmission only.

### Accessories not shown:

- Cargo Tote
- Front-End Mask
- Premium License Plate Frame

See your dealer for complete warranty details. Toyota reserves the right to make modifications to actual products.